

Filter media

Ti 202

Polyester fleece with PTFE membrane

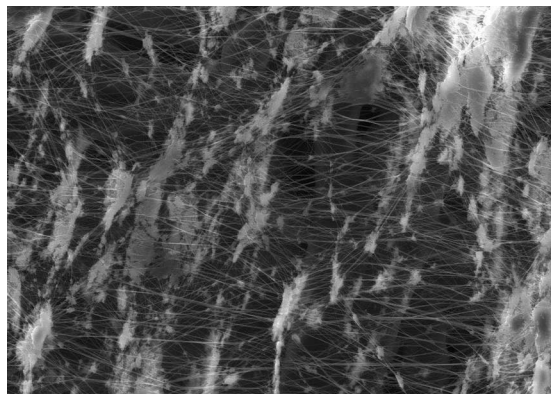
1. Features

The two-layer structure of this filter media enables the maximum benefit of the surface filtration.

The fine-pored PTFE membrane separates almost all the dust on the membrane surface. Owing to its very smooth, fibre-free surface, Ti 202 is especially suitable for cleanable dust filter cartridges. Especially challenging filtration tasks will be solved with a long service life.

Characteristics

- Efficient surface filtration thanks to the microporous PTFE membrane
- High mechanical strength
- Very good chemical resistance to acids and organic solvent vapours
- Very smooth, fibre-free surface
- Compliance with the requirements of DIN EN 60335-2-69 and EN 1822-3 class H10 at $v = 1\text{m/min}$
- FDA approval acc. to 21 CFR Ch. I § 177.1550
- Worldwide distribution

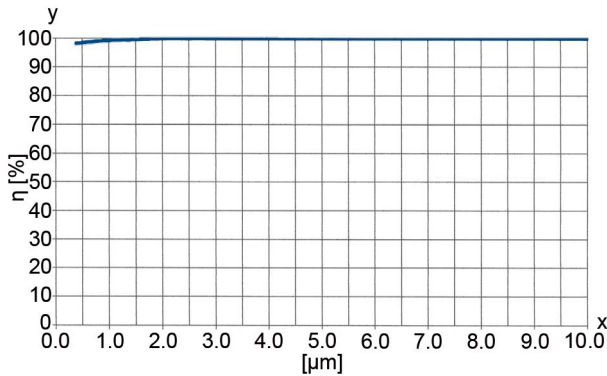


2. Technical data

Type	Media	Media thickness [mm]	Weight [g/m ²]	Air permeability [m ³ /m ² h]	max. operating temperature [°C]	Test certificates/ dust classes
Ti 202	Polyester fleece (PET) with PTFE membrane	0.50	200	260 at Δp 200 Pa	120 (permanent) 140 (peaks)	DIN EN 60335-2-69 "M"

Technical data is subject to change without notice!

3. Filtration efficiency



Filtration efficiency: > 99,99 %
at 0.5 μm

Test conditions
Inflow velocity: 3.36 m/h
Mass concentration: 200 mg/m³
Test dust: Dolomit DRB 20
(Rock flour)

x = Particle size [μm]
 y = Filtration efficiency η [%]

These values may vary depending on the nature of the dust, the composition of the gas and the cartridge design.

4. Chemical resistance/mechanical properties

Chemical resistance				Mechanical properties			
	Very good	Good	Limited		Very good	Good	Limited
Water	x			Surface quality (smoothness)	x		
Hydrolysis			x	Stability	x		
Acids		x		Abrasion resistance			x
Alkalis			x	Cleanability (jet pulse)	x		
Solvents		x		Washability		x	

These properties are of a purely qualitative valuation and depending on the nature of the dust, the composition of the gas and the operating conditions.

5. Design

Please contact us for detailed technical information, any open questions and for general expert advice. Completion of the relevant questionnaire would facilitate in the coordination of all the important parameters.

Comprehensive documentation on our product range, cleaning units and cartridges can be provided.

MAHLE Industriefiltration GmbH
Schleifbachweg 45
D-74613 Öhringen
Phone +49 7941 67-0
Fax +49 7941 67-23429
industriefiltration@mahle.com
www.mahle-industriefiltration.com
70518378.09/2011